



THE STANHOPE

RESIDENCES

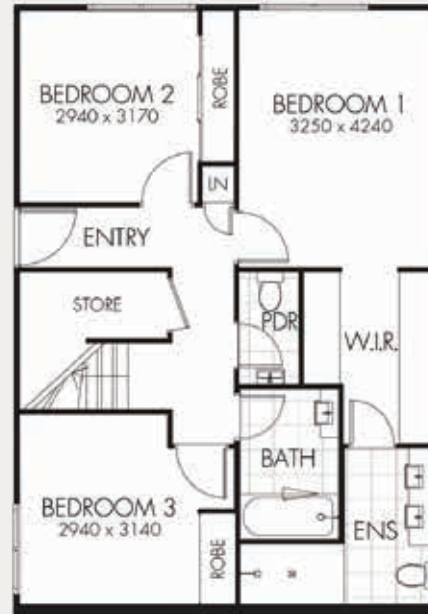
Type A2

- 3 bedrooms
- 2.5 bathrooms
- Double lock up garage

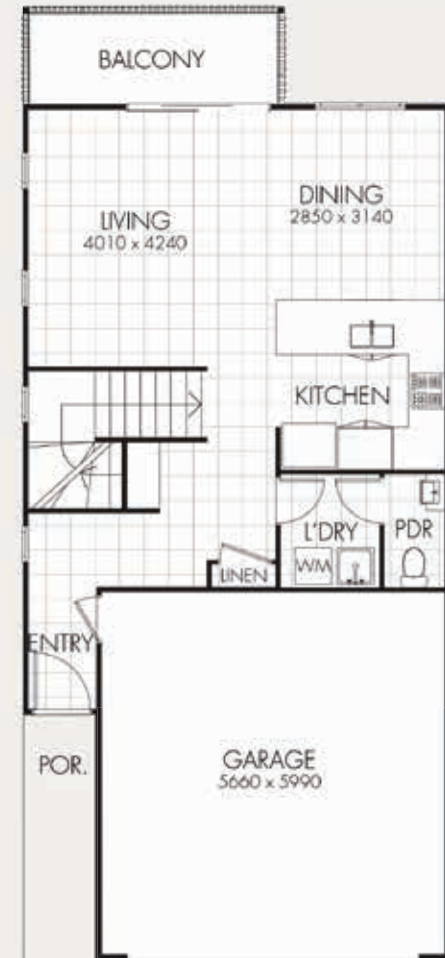
Courtyard Level	70.9m ²
Ground Floor Area	59.1m ²
Garage	35.8m ²
Balcony	3.6m ²
Porch Entry	1m ²
Total	170.4m ²



DISCLAIMER: While every reasonable care has been taken in the preparation of this brochure and all particulars contained herein are believed to be correct at the time of printing, interested parties must rely upon their own inspections and inquiries. These booklets do not and will not form any part of the Contract of Sale. Illustrations and photography are for presentation purposes and should be regarded as indicative only. Dimensions and measurements noted in this brochure are subject to change through the final subdivision registration process and interested parties must rely on their own inspections, investigations and review of contract of sale documentation. The information contained in this brochure was correct and up to date at the time of printing, and may be subject to change. Printed August 2018.



GROUND



FIRST FLOOR



For Sales Information:

Tyler Scott +61 477 064 133

Deborah Provost +61 408 652 963

sales@dpprojectmarketing.com

Site: 117 Old Coach Road, Coomera QLD 4214

bosproperty.com.au



THE STANHOPE

RESIDENCES

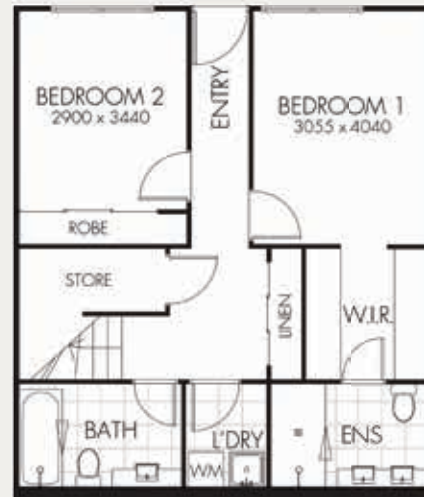
Type A3

- 3 bedrooms
- 3 bathrooms
- Single garage + carspace

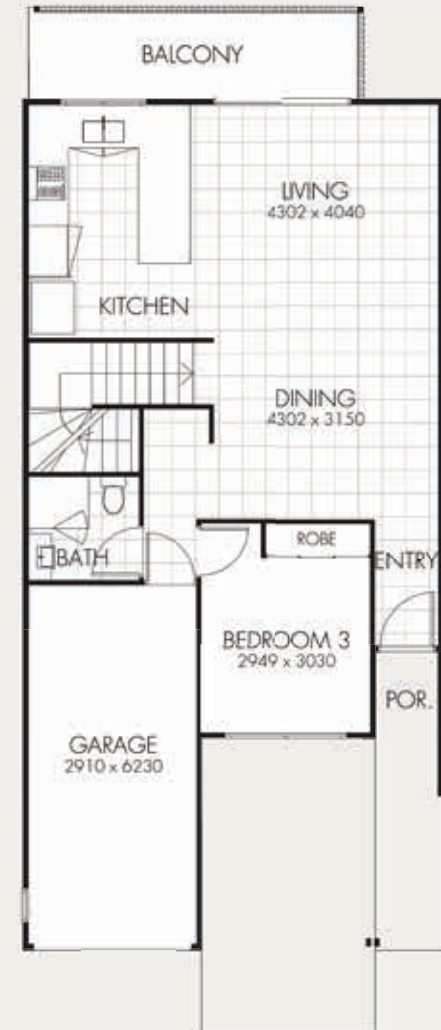
Courtyard Level	62.2m ²
Ground Floor Area	70.9m ²
Garage	19.7m ²
Balcony	4.2m ²
Porch Entry	1m ²
Total	158m ²



DISCLAIMER: While every reasonable care has been taken in the preparation of this brochure and all particulars contained herein are believed to be correct at the time of printing, interested parties must rely upon their own inspections and inquiries. These booklets do not and will not form any part of the Contract of Sale. Illustrations and photography are for presentation purposes and should be regarded as indicative only. Dimensions and measurements noted in this brochure are subject to change through the final subdivision registration process and interested parties must rely on their own inspections, investigations and review of contract of sale documentation. The information contained in this brochure was correct and up to date at the time of printing, and may be subject to change. Printed August 2018.



GROUND



FIRST FLOOR



For Sales Information:

Tyler Scott +61 477 064 133

Deborah Provost +61 408 652 963

sales@dpprojectmarketing.com

Site: 117 Old Coach Road, Coomera QLD 4214

bosproperty.com.au



THE
STANHOPE
RESIDENCES

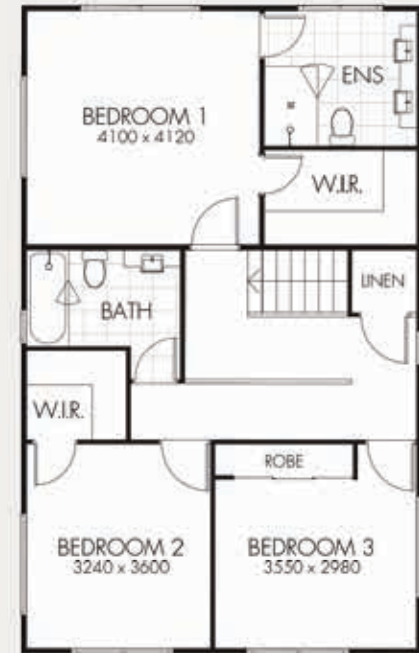
Type A4

- 3 bedrooms
- 2.5 bathrooms
- Double lock up garage

Ground Floor Area	63.1m ²
Level 1 Floor Area	80.3m ²
Garage	34.9m ²
Balcony	6m ²
Porch Entry	5.2m ²
Total	189.5m ²



GROUND



FIRST FLOOR



For Sales Information:

Tyler Scott +61 477 064 133

Deborah Provost +61 408 652 963

sales@dpprojectmarketing.com

Site: 117 Old Coach Road, Coomera QLD 4214

bosproperty.com.au

DISCLAIMER: While every reasonable care has been taken in the preparation of this brochure and all particulars contained herein are believed to be correct at the time of printing, interested parties must rely upon their own inspections and inquiries. These booklets do not and will not form any part of the Contract of Sale. Illustrations and photography are for presentation purposes and should be regarded as indicative only. Dimensions and measurements noted in this brochure are subject to change through the final subdivision registration process and interested parties must rely on their own inspections, investigations and review of contract of sale documentation. The information contained in this brochure was correct and up to date at the time of printing, and may be subject to change. Printed August 2018.



THE STANHOPE

RESIDENCES

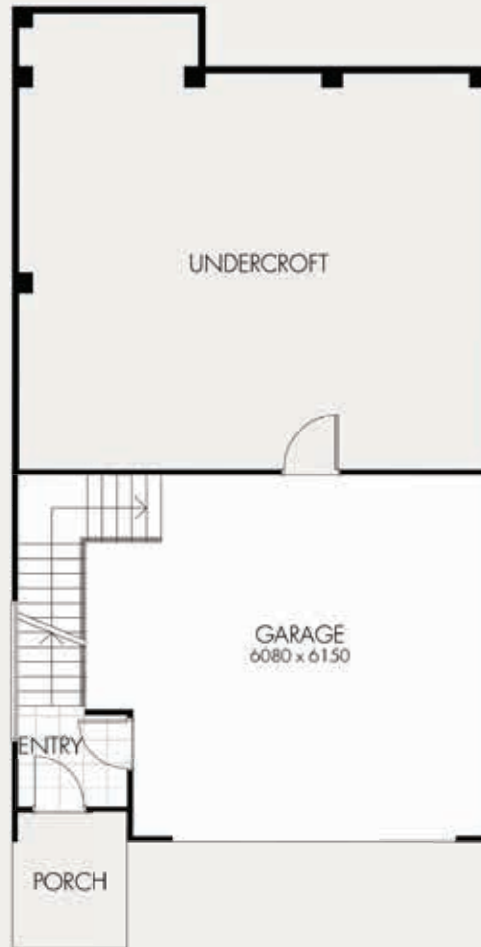
Type B1

- 3 bedrooms
- 2.5 bathrooms
- Double lock up garage

Level 1 Floor Area	114.6m ²
Garage	41.6m ²
Balcony	9.6m ²
Courtyard	4.5m ²
Porch Entry	4.8m ²
Total	175.1m ²



DISCLAIMER: While every reasonable care has been taken in the preparation of this brochure and all particulars contained herein are believed to be correct at the time of printing, interested parties must rely upon their own inspections and inquiries. These booklets do not and will not form any part of the Contract of Sale. Illustrations and photography are for presentation purposes and should be regarded as indicative only. Dimensions and measurements noted in this brochure are subject to change through the final subdivision registration process and interested parties must rely on their own inspections, investigations and review of contract of sale documentation. The information contained in this brochure was correct and up to date at the time of printing, and may be subject to change. Printed August 2018.



GROUND



FIRST FLOOR



For Sales Information:

Tyler Scott +61 477 064 133

Deborah Provost +61 408 652 963

sales@dpprojectmarketing.com

Site: 117 Old Coach Road, Coomera QLD 4214

bosproperty.com.au



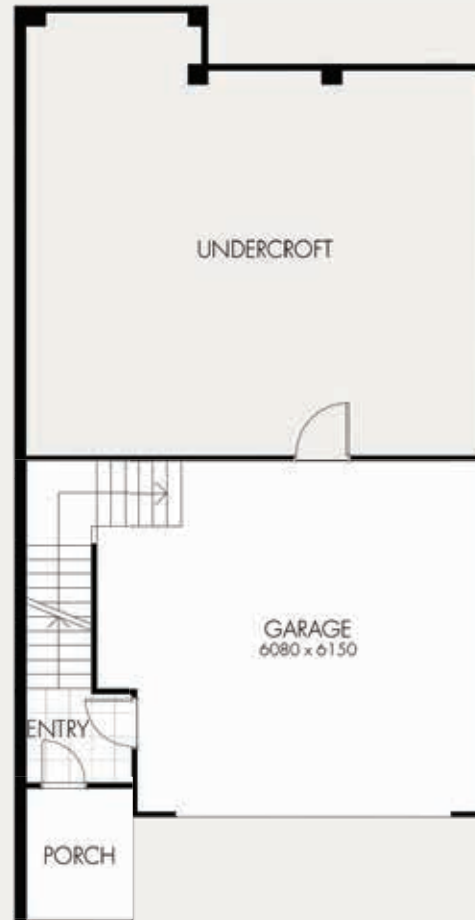
THE STANHOPE

RESIDENCES

Type B2

- 3 bedrooms
- 2.5 bathrooms
- Double lock up garage

Level 1 Floor Area	108.7m ²
Garage	41.6m ²
Balcony	6.9m ²
Courtyard	4.5m ²
Porch Entry	4.9m ²
Total	166.6m ²



GROUND



FIRST FLOOR



For Sales Information:

Tyler Scott +61 477 064 133

Deborah Provost +61 408 652 963

sales@dpprojectmarketing.com

Site: 117 Old Coach Road, Coomera QLD 4214

bosproperty.com.au

DISCLAIMER: While every reasonable care has been taken in the preparation of this brochure and all particulars contained herein are believed to be correct at the time of printing, interested parties must rely upon their own inspections and inquiries. These booklets do not and will not form any part of the Contract of Sale. Illustrations and photography are for presentation purposes and should be regarded as indicative only. Dimensions and measurements noted in this brochure are subject to change through the final subdivision registration process and interested parties must rely on their own inspections, investigations and review of contract of sale documentation. The information contained in this brochure was correct and up to date at the time of printing, and may be subject to change. Printed August 2018.